

Innovative laboratory plastic ware solutions

Tissue Culture, Crystallization, HTS Drug Discovers, Analysis, Liquid Handling



Products Catalogue 2006~2007

Cooperation Innovation Quality Service

Contents

Introduction.....	1
Tissue Culture Plate.....	2
Tissue Culture Dish.....	3
Culture Coverslips.....	3
Ultra Low Binding ware	4
Pasteur Pipette	5
Petri Dish.....	5
Centrifuge Tube	5
Filter Plate.....	6
Deep Plate.....	6
ELISA Plate.....	6
Crystallization Microplate	7
Seal Film	7
Tissue Co-Culture Ware.....	8
Responsive Tissue Culture Plate.....	8

Profile Introduction

Cosmo Biosciences Inc.专业从事用于生命科学研究的一次性消耗品的研发、生产与销售服务，主要产品应用在：细胞培养、蛋白质晶体研究、酶联免疫分析、高通量新药筛选与液体处理等方面；为更广泛的增加产品与仪器兼容性，我们设计产品时遵循国际行业试行标准；同时我们为客户提供塑料模具的设计、产品加工与特殊产品的协助定制等服务。

Cosmo 更为骄傲的提供高分子聚合物的表面特殊处理，根据不同实验的需求，处理后的表面表现为亲水、疏水性和带有多样性的功能团，从而来满足于细胞和组织培养、蛋白质晶体分析、酶联免疫学研究和液体处理时对产品的表面要求等实验。

我们的目标是想通过我们的努力与技术知识，希望与战略伙伴一起为消费者提供更为完整的实验室消耗品解决方案。如果您有意与我们合作，欢迎与我们联系！

Cosmo Biosciences Inc. specializes in laboratory plastic consumables research and development and manufacture, within molecular biology, cell culture, Protein Crystallization , immunology and HTS drug discovers . All Products design was followed with international Industry standard format; We also provide laboratory plastic ware's mould design and Technology service solution.

Cosmo's major to treat polymer surface, so that Tissue Culture treated surface is hydrophilic or hydrophobic. Our aim is to provide an excellent range of up-to-date products which meet the needs of today's customers, and to help our customers use our products to their best advantage.

Tissue Culture treated vessel surfaces assure consistent cell growth and outspread. All treated tissue-culture surface is hydrophilic and result in the incorporation of a variety of functional groups that support cell culture. To ensure tissue & cell attach and reproduce, all Cosmo tissue-culture treatment is performed in a clean workshop.

Now in China market, we are supplying our products to lifesciences institutes, hospitals, university laboratories, and Biologic companies. Cosmo's main customers are Peking University (PKU), Institute of Biochemistry and Cell Biology, Chinese academy of sciences (CAS), Institute of zoology CAS and more of university laboratories. We are striving hard to supply our products in worldwide market.

Cosmo's synonymous with innovation, cooperation, quality and service.

Custom & OEM Solution:

We provide with design plastic mould tool and special products and inject service, also we help our customer for custom special products or OEM include the following groups:

Custom:

Special products design and Plastic mould Manufacture for laboratory Plastic consumables.

OEM:

TC Treated surface

Immuno-assay surface

Low-binding Surface

Injecting and manufacture

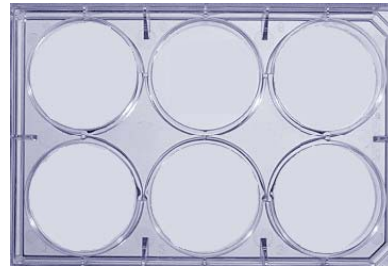
Techniques used in the generation of custom products include:

Offers rapid solutions to problems by consultancy, design and speedy prototyping for Biotech, Pharmaceutical and Life Science companies.

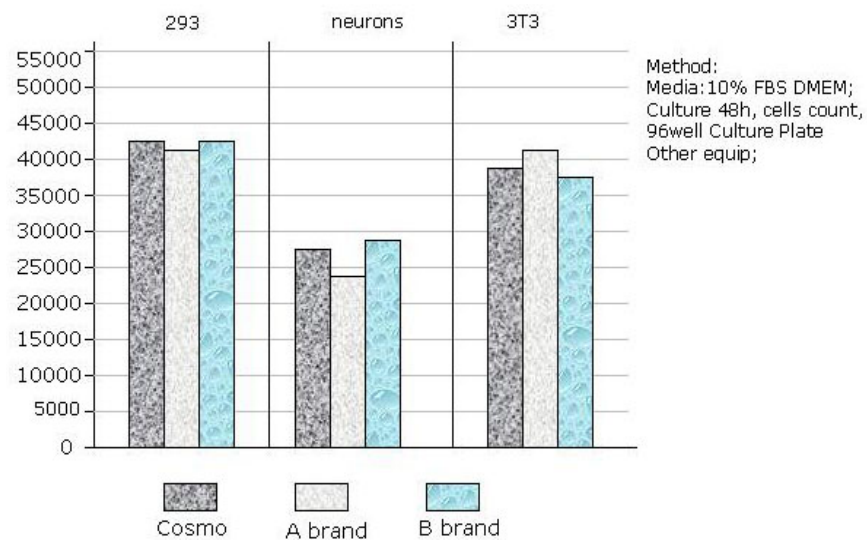
More information please mail to : techservice@cosmobrand.com.cn

Cosmo 创新的细胞培养板设计 (Advanced Design innovation)

1. 数字与字母编码, 方便记录 Alphanumeric well identification
2. 不可逆转性的盖子设计 One-way lid
3. 可重叠性 Condensation rings
4. 低蒸发性的盖子 Low-evaporation lid
5. 仪器的兼容性 Compatibility for instrument
6. 有锯齿的侧面板 Serrated gripping panels
7. 实验记录区 Writing patch
8. 易握的盖子 Easy taking lids
9. 条形码便于质量跟踪 Bar code for quality



Comparison: Cosmo's tissue culture with other brand



Tissue Culture Plates

- TC(Tissue Culture) treated for excellent cell adhesion and growth
- Made of Clear-Crystal-grade Polystyrene and excellent optical quality
- One-way lid and Serrated gripping panels and Writing patch
- Low-Evaporation Lid and condensation-ring lid prevents cross-contamination while still allowing for gas exchange
 - Alphanumeric well identification
- Industry standard footprint for instrument compatibility
- Available in individually wrapped easy peel packs and bulk packs
- Gamma irradiated for sterility
- RNase, DNase and Pyrogen free



Details and Ordering Information

Multiwell plate, Polystyrene. With Lids. Sterile

Cat. No.	1101-006	1101-012	1101-024	1101-096
Number of wells	6	12	24	96
Bottom shape	Flat	Flat	Flat	Flat
Suggested working volume, ml/well	15.5	6.0	3.5	0.37
Growth Area, Cm ² /well	9.6	3.8	2.0	0.32
External dimensions, mm	128 x 86	128 x 86	128 x 86	128 x 86
Units per pack/case	1/100	1/100	1/100	1/150
Unit Price per piece(U.S Dollars)	Worldwide	Worldwide	Worldwide	Worldwide

Tissue Culture Dish

- Treated TC surface for consistent cell attachment and growth
- Made of Class VI Polystyrene, With lids, Optically and uniform surface suitable for microscopy
- stackable, convenient one hand operation
- ventilation ribs minimize condensation
- Disposable One time use for laboratory
- Guaranteed sterile via gamma irradiation

Details and Ordering Information

Tissue Culture Dishes, Sterile by Gamma, Air vent Design



Cat. No.	1101-035	1101-060	1101-090	1101-100	1101-150
Name	35*10	60*15	94*15	100*20	150*20
Max. External dimensions, mm	40 x 12	60 x 15	90 x15	100 x20	147 x 21
Suggested working volume, ml	9.6	42.0	95.0	157.0	353.0
Growth area (cm ²)	9.6	23.0	59.0	78.0	147.0
Units per pack/case	10/1600	10/840	10/500	10/500	10/100
Availability	Worldwide	Worldwide	Worldwide	Worldwide	Worldwide

Cell Culture Coverslips

Application

Tissue Culture

Fluorescence Assays

Features

Dia.8mm is Compatibility for 24 well Plate

Dia.13mm is Compatibility for 12 well Plate

Dia.20mm is Compatibility for 6well Plate and 35mm Dish

Circle and square version

Materials: Crystal-PE

Description

Coverslips have a original surface treatment for cell culture and are required when small areas of adherent cells are aseptically



removed for fixation, staining, and microscopic observation. The modified PE plastic is surface-treated on both sides and its optical clarity enables trouble-free working with coverslips. Sterile coverslips are available in sizes Ø22 and 8 and 13mm.

Ordering Information

Cat No	Name	Description
1101-008	ø8 mm x thickness0.22 mm Hydrophobic circle	100 slides per Bag
1101-018	ø 8 mm x thickness0.22 mm Hydrophilic circle	100 slides per Bag
1101-013	ø 13 mm x thickness0.22 mm Hydrophobic circle	100 slides per Bag
1101-113	ø 13 mm x thickness0.22 mm Hydrophilic circle	100 slides per Bag
1101-020	20x20mmxthickness0.22 mm Hydrophobic square	100 slides per Bag
1101-120	20x20mmx thickness0.22 mm hydrophilic square	100 slides per Bag

Ultra-Low Binding Tubes and Tips surface for DNA and Protein

Feature

Made in Original polypropylene of materials

Save percentage 95% above

Treated surface is low binding for DNA and Protein (Not Silicon)

Fit all standard rotors

Autoclavable

RNAse / DNAse free

Application

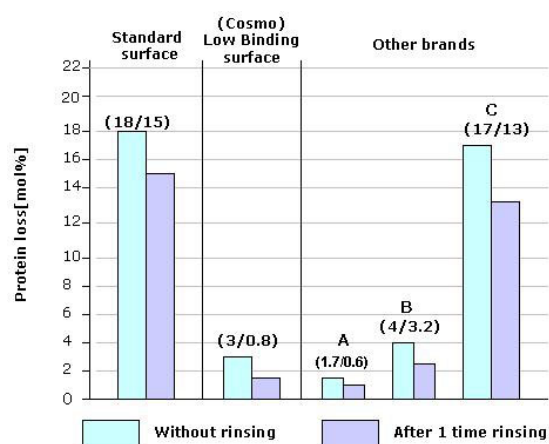
Save Valuable Sample

Liquid handling for DNA and Protein

Description

Treated surface is hydrophobic, This treated process Without use reagent(Silicon).

Advanced treated tubes and Tips surface is ultra low binding surface that save the thin samples. Molecules do not bind to the tube and tips surface and it is very easy to save your valuable sample volume. Standard surface is primal material made.



Ordering Information

Cat.No.	Size	Surface	Pkg/Case
Tips			
1106-002	10 µl	Treated surface	1000/pkg 20pkg/case
1106-003	10 µl	Standard	1000/pkg 40pkg/case
1106-021	200 µl	Treated surface	1000/pkg 10pkg/case
1106-022	200 µl	Standard	1000/pkg 20pkg/case
1106-101	1000 µl	Treated surface	500/pkg 10pkg/case
1106-102	1000 µl	Standard	500/pkg 20pkg/case
PCR Tube			
1103-002	0.2ml	Treated surface	1000/pkg 10pkg/case
1103-003	0.2ml	Standard	1000/pkg 20pkg/case
Tube			
1106-005	0.5ml	Treated surface	1000/pkg 10pkg/case
1106-006	0.5ml	Standard	1000/pkg 20pkg/case
1106-007	1.5ml	Treated surface	500/pkg 10pkg/case
1106-008	1.5ml	Standard	500/pkg 20pkg/case

Disposable Pasteur Pipette

Description

- Ideal for transferring liquids safely
- Manufactured from non-toxic low density polyethylene
- Precise graduations on 1ml ensuring consistent results
- Can be heat sealed for sample storage and transportation



Ordering Information

Cat.No.	Description	Graduation	Pkg
1105-001	Pasteur, graduated Pipette	0.2ml	500/Case
1105-002	Pasteur, graduated Pipette	1ml	500/Case
1105-003	Pasteur, graduated Pipette	3ml	500/Case

Disposable Petri Dish

Feature

- Made of Class VI Polystyrene, With lids, Optically and uniform surface suitable for microscopy
- stackable, convenient one hand operation
- ventilation ribs minimize condensation
- Disposable only for laboratory
- Guaranteed sterile via gamma irradiation



Ordering Information

Cat.No.	Description	Dimension OD x OH (mm)	PKG SIZE
1102-035	Petri dish, 35mm, ventilation	35 x 10	10/Column 1600/Case
1102-060	Petri dish, 60mm, ventilation	60 x 15	10/ Column 840/Case
1102-090	Petri dish, 90mm, ventilation	94 x 15	10/ Column 500/Case
1102-100	Petri dish, 100mm, ventilation	100 x 20	10/ Column 500/Case
1102-150	Petri dish, 150mm, ventilation	150 x 20	2/ Column 100/Case

Centrifugal Tubes

15 & 50 ml

Feature

- Made in Class VI polypropylene of materials
- Printed volume graduations along length of tube
- Flat cap and frosted area on tube provides writing surface for sample identification
- Tube and cap suitable for freezing
- Leak-proof closure
- Polypropylene (PP) tube has excellent chemical resistance
- Withstands temperatures up to 20min. 121°C
- RNase / DNase free



Details and ordering information

Cosmo , Centrifuge Tubes , Sterile , Bottom shape

Cat. No.	Material tube/cap	Cap type	Total volume,	Volume graduations	External dimensions, mm	Max. RCF tested	Packing	Units per pack/case
1105-015	PP/HDPE	Dome	15 ml	printed	120 x 17	10,000 x g	Racked	50/500
1105-115	PP/HDPE	Dome	15 ml	printed	120 x 17	10,000 x g	Bag	50/500
1105-050	PP/HDPE	Dome	50 ml	printed	115 x 30	10,000 x g	Racked	25/500
1105-150	PP/HDPE	Dome	50 ml	printed	115 x 30	10,000 x g	Bag	25/500

96 Well Filter Plates

- Individually sealed wells eliminate sample cross-talk and contamination
- Full 1ml and 0.3ml sample volume with drip tips directors
- Four available membrane choices, plus membrane and Protein Crash Plate



Cat No.	Description	Qty/pkg
1109-008	96-well Filter Plate, GF membrane (round, 1 ml)	50
1109-006	96-well Filter Plate, GF membrane (round,0.3ml)	100

96 Deep Well Plates

- Alpha-numeric grid for sample identification
- Available in autoclavable polypropylene
- Stackable design with two write on areas for plate identification



Cat No.	Description	Qty/pkg
1109-002	1.6 ml, 96 Deep Well Plate, PP, Square well, round bottom	10/100
1108-003	2.2 ml, 96 Deep Well Plate, PP, Square well, round bottom	10/100
1109-004	96well V-Shape bottom 2.2ml per well	10/100

ELISA Plates

Application

ELISA method research

Feature

Consists of 12 or 8 strips, 8 or 12 reservoirs per strip

Polystyrene

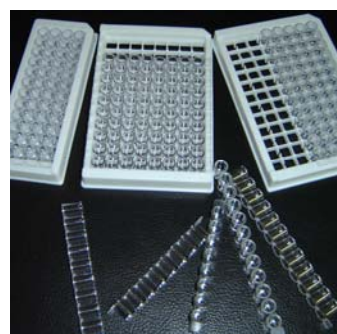
Description

This plate consists of 12 or 8 strips, 8 or 12 reservoirs per strip. Each strip can be individually sealed using the supplied 8 or 12 well cap strip. 12 or 8 strips fit into the supplied Cosmo's plate frame, creating a 96 well, flat bottom plate. Approximate size: 12.8 cm x 8.6 cm.

Test Report:

High-Binding: approximate 500ng Mouse IgG/cm²

Mid-Binding: approximate 250ng Mouse IgG/cm²



Details and ordering information:

Cat. No.	1105-096	1105-096A	1105-196	1105-001	1105-002	1105-003
Configuration-Bottom	Flat	Flat	Flat	Flat	Flat	Flat
Surface	High-Binding	High-Binding	High-Binding	Mid-Binding	Mid-Binding	Mid-Binding
External dimensions(mm)	128 x 86	128 x 86	128 x 86	128 x 86	128 x 86	128 x 86
Suggested working volume, $\mu\text{l}/\text{well}$	360	360	360	360	360	360
Total surface area, cm^2/well	2.7	2.7	2.5	2.7	2.7	2.5
Modules(8 or 12 well strip)	8	12	integrative	8	12	integrative
CV	≤ 3	≤ 3	≤ 3	≤ 5	≤ 5	≤ 5
Units per pack/case	10/200	10/200	10/200	10/200	10/200	10/200

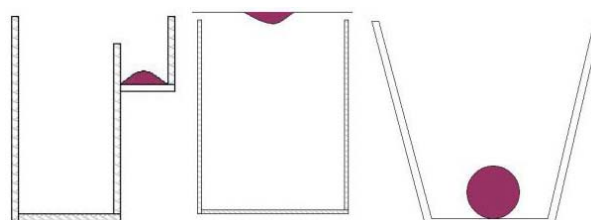
Crystallization Plate

(24wel 48well 72well 96well)

Applications

Distinct format microplate for sitting and handinig drop and match crystallization Method

Match



Features

SBS standard microPlate is compatible with 8 and 12 channel pipetters and manual set up and with robotic automation

24-3 well plate maximum fill volume of 500 μl for the reservoir well and 4 μl for each of the three identical sample wells

48-2 well plate maximum fill volume of 500 μl for the reservoir well, 4 μl for the lower sample well

96 well plate maximum fill volume of 300 μl for the reservoir well, sample well, & 4 μl for the lower sample well

Materials

Crystal polystyrene

Ordering Information

Cat. No.	1108-024	1108-124	1108-048	1108-072	1108-096
Reservoir with sample wells	24	24-2	48-2	72	96
Suit for Crystal Method	Hanging drop	Sitting drop	Sitting drop	Match	Sitting drop
External dimensions(mm)	132 x 90	128 x 86	128 x 86	83.0 x 58.0	128 x 86
Reservoir working volume, $\mu\text{l}/\text{well}$	500	360	360	-----	295
Sample working volume, $\mu\text{l}/\text{well}$	-----	4.0	4.0	10.0	4.0
Units per pack/case	10/200	10/200	10/200	10/200	10/200

Clear seal film

Applications

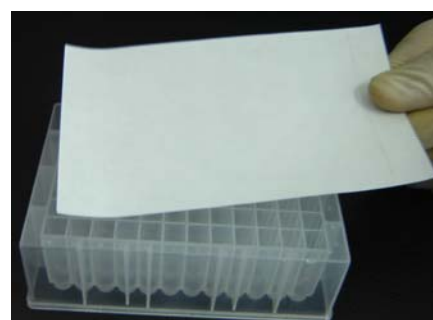
Used for film multiwell Plate

Features

Optically clear

Easy to handle

Does not stick to gloves



Description

Clear seal Film fits 96 well plates such as the Crystal Clear Strips, 96 Well Protein Crystallization Plate, Minimal evaporation, minimal cross-well contamination, easy to handle, and optically clear. Single coated, 2 mil (0.05 mm), clear polyolefin film with pressure-sensitive silicone-based adhesive. Supplied as a 141.3 mm x 79.4 mm film with polyester release liner (backing). Seals well to polypropylene, polystyrene, and polycarbonate plates. Compatible with aqueous and organic solvents. Suitable for use between -70 and 110°C.

For best seal, use with Clear Seal Film

Ordering Information

Cat No	Name	Description
1107-001	Clear Seal Film	300 pack
1107-011	Clear Seal Film	600 pack

Tissue Co-Culture Ware **New**

Applications

Uses in cell culture including transport studies, toxicity tests, Chemotaxis studies and electron microscopy, etc



Description

Both membrane types are transparent when wet and are suitable for phase contrast and Normanski Optic Systems, Insert well is a polystyrene fitted with a PC membrane bottom for use in 6 and 24-well plates. Available in two mesh sizes and two diameters, provide ultimate flexibility in retaining fragile tissues during processing and staining.

6well Netwells of 24mm diameter or 24well of 10mm diameter.

More insert well information , welcome visit our website or Email to us.

Ordering Information:

Cat.No.	Description	Pore size	Sterile	pack/case
650-106	6well of 24mm diameter, Polycarbonate membrane,	0.4µm	Yes	1/4
650-206	6well of 24mm diameter, Polycarbonate membrane,	3.0µm	Yes	1/4
650-124	24well of 10 mm diameter, Polycarbonate membrane,	0.4µm	Yes	1/4
650-224	24well of 10 mm diameter, Polycarbonate membrane ,	3.0µm	Yes	1/4

Responsive Tissue Culture 96well Plate

New



Featured

Made of special polymer Material

Temperature responsive polymer is fixed to the surface of the cultureware at nano-thickness level.

Cells are cultured at 37 degrees Celsius and collectable approximately 10-30min after controlling temperature to 20-25 degrees Celsius.

Applications

Ideal Suit for harvesting fragile cells such as stem cells and neurons, and macrophages cells etc. Better results can be offer Collection of intact and viable single cell suspension.

Stem cell culture and tissue culture.
Research on extra cellular matrix.

Description

Collection of intact viable cells without enzymatic processing.

Trypsin is well known for its deterioration to the functions of cells. Maintenance of their activities is possible with Cosmo's advanced culture ware is used for cell culture.

Harvest cells by mere reduction of temperature.

It completely do without trypsin when collecting cells since cell detachs by just the culture surface response. So that the Processing would save time 80%.

96 multiwell format is especially suitable for cell cloning by limited dilution.

Instructions of usage

Culturing cells

First of all, pre-warm the medium to 37 degrees celsius in the incubator.

When seeding cells, please do use the pre-warmed medium to ease attachment of cells.

Seed cells evenly over the culture surface to prevent cells being concentrated in one area.

The surface becomes hydrophobic above 32 degrees celsius therefore cells must be cultured above this point.

Medium change can be carried out as if using normal cultureware without polymer. Please use pre-warmed medium for change.

When cells are difficult to attach, please use medium that contains FCS.

Attachment time of the cells may vary depending on the type of the cell.

Detachment of cells

The surface of the cultureware becomes hydrophilic under 32 degrees celsius. Cells are easier to detach under this temperature.

When collecting cells, lower the temperature down to approximately 20 degrees celsius and wait about 30 minutes.

Depending on the type of the cells cultured, they detach automatically.

Same results can be achieved by leaving the cultureware in the refrigerator set at 4 degrees celsius for 10 minutes.

The cells that did not come off automatically can be detached by agitating them by pipet with medium.

Some cells may not detach completely. The results may vary by the type of the cells.

Detachment of cells are easier when the temperature is lowered before cells become confluent.

The product is intended for one time use only. Please do not re-use the product.

The product is only for laboratory use.

Ordering Information

Cat No	Name	Description
1102-096	Responses Cell Culture Plate 96well	10 pack
1102-196	Responses Cell Culture Plate 96well	100 pack

About more advanced responses cell culture ware details , please don't hesitate contact us:

E-mail : techservice@cosmobrand.com.cn